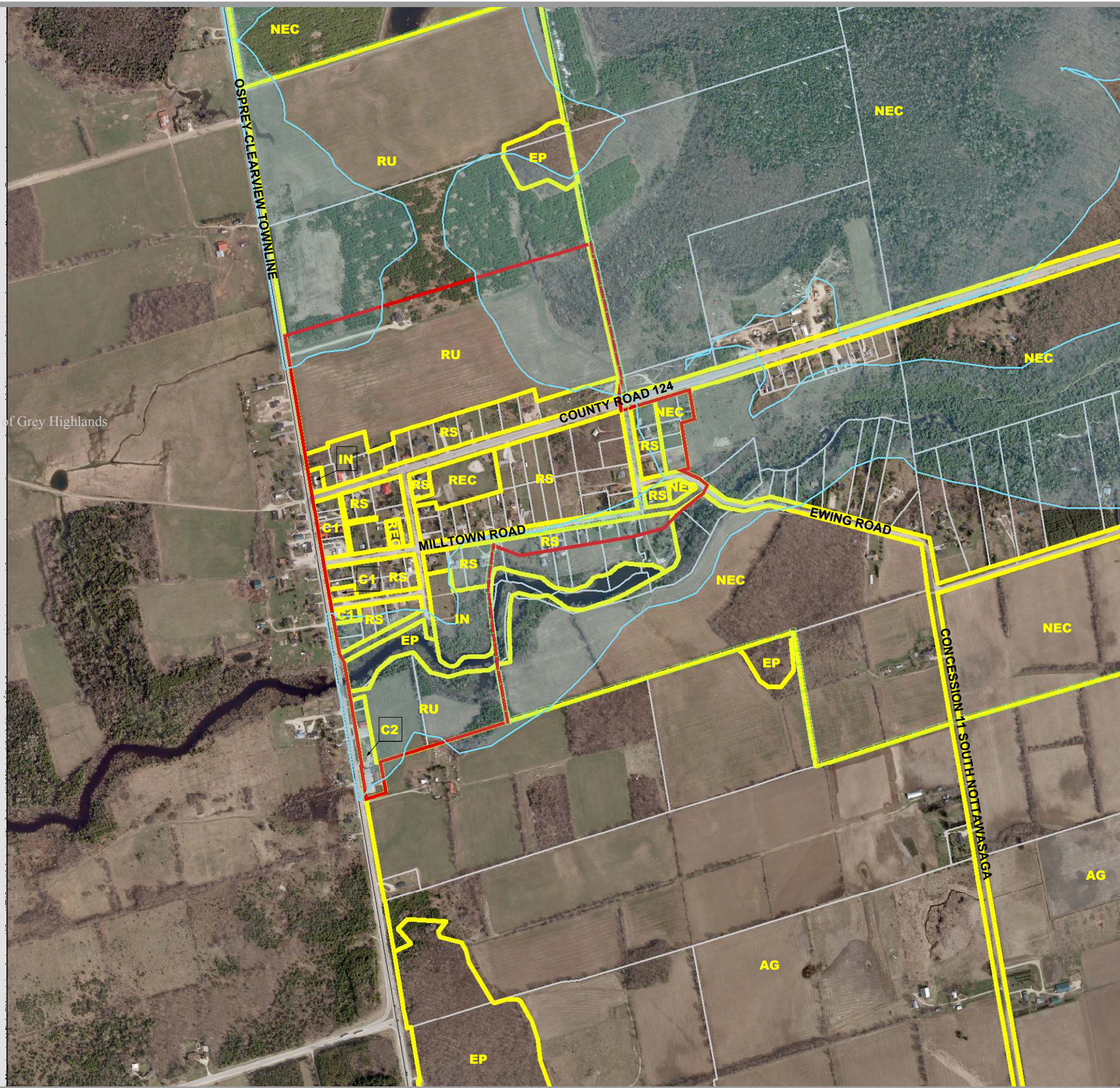
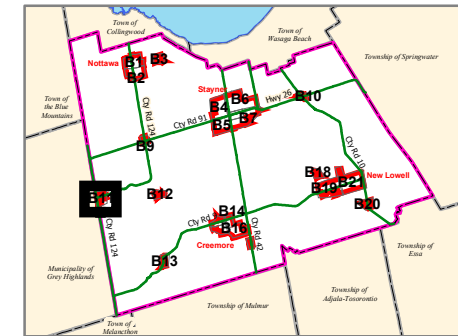


# CLEARVIEW TOWNSHIP COMPREHENSIVE ZONING BY-LAW

## SCHEDULE B11 SINGHAMPTON AREA



<b>AGRICULTURAL</b>	MG INDUSTRIAL GENERAL
AG AGRICULTURAL	MP INDUSTRIAL PRESTIGE
AGC AGRICULTURALLY RELATED COMMERCIAL	MR INDUSTRIAL RESTRICTED
AG-EL AGRICULTURAL LIVESTOCK USE EXCEPTION	MW INDUSTRIAL WASTE DISPOSAL
AG-ER AGRICULTURAL RESIDENTIAL USE EXCEPTION	<b>NIAGARA ESCARPMENT</b>
AGI AGRICULTURALLY RELATED INDUSTRIAL	NEC NIAGARA ESCARPMENT COMMISSION
AGK AGRICULTURAL KENNEL	<b>RECREATION</b>
<b>COMMERCIAL</b>	REC RECREATION LANDS
C1 COMMERCIAL GENERAL	RECT RECREATIONAL TRAIL
C2 COMMERCIAL HIGHWAY	<b>RESIDENTIAL</b>
C3 COMMERCIAL SERVICE	RE RESIDENTIAL ESTATE
C4 COMMERCIAL LARGE FORMAT	RS RESIDENTIAL HAMLET
C5 COMMERCIAL NEIGHBOURHOOD	RS1 RESIDENTIAL LARGE LOT
C6 COMMERCIAL COUNTRY	RS2 RESIDENTIAL LOW DENSITY
CT1 COMMERCIAL TRANSITION 1	RS3 RESIDENTIAL MULTIPLE LOW DENSITY
CT2 COMMERCIAL TRANSITION 2	RS4 RESIDENTIAL MEDIUM DENSITY
RECC COMMERCIAL RECREATION LANDS	RS5 RESIDENTIAL MULTIPLE MEDIUM DENSITY
<b>ENVIRONMENTAL</b>	RS6 RESIDENTIAL HIGH DENSITY
EP ENVIRONMENTAL PROTECTION	RSBB SETTLEMENT AREA B&B
<b>DEVELOPMENT AREA</b>	<b>RURAL</b>
DA DEVELOPMENT AREA	RU RURAL
<b>INSTITUTIONAL</b>	RUK RURAL KENNEL
IN INSTITUTIONAL	
INR1 INSTITUTIONAL RESIDENTIAL 1	
INR2 INSTITUTIONAL RESIDENTIAL 2	
<b>INDUSTRIAL</b>	
MA INDUSTRIAL AIRPORT	

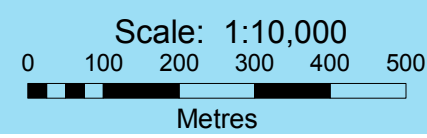
  

Settlement Area Boundary	Niagara Escarpment Boundary
Commercial Transition 1 Area	Zone Boundary
FP Hazard Land Area	Parcel Boundary
FPSP Hazard Land Special Policy	Utility Line
MARA Mineral Aggregate Resource Area	Railway
WDAA Waste Disposal Assessment Area	Abandoned Railway
WHPA Well Head Protection Area	
Subject to Appeal Before OMB	

By-Law 06-54  
As Approved by Council, October 23, 2006

*Fran Sainsbury*  
Fran Sainsbury, Mayor  
*Robert Campbell*  
Robert Campbell, Clerk

This map, either in whole or in part, may not be reproduced without the written authority from the County of Simcoe. Copyright County of Simcoe Land Information Network Cooperative © LINC 2006.  
Produced in part under license from the Cities of Barrie & Orillia, the Ontario Ministry of Natural Resources (Copyright © Queen's Printer 2006), © Teraviva Enterprises Inc. and its suppliers all rights reserved, and Members of the Ontario Geographical Data Exchange.  
THIS IS NOT A PLAN OR SURVEY.  
For information call (705) 726-9300 or visit www.countyofsimcoe.on.ca



Note: All the elements in the legend may not appear on the map.  
SCHEDULE B11 SINGHAMPTON AREA