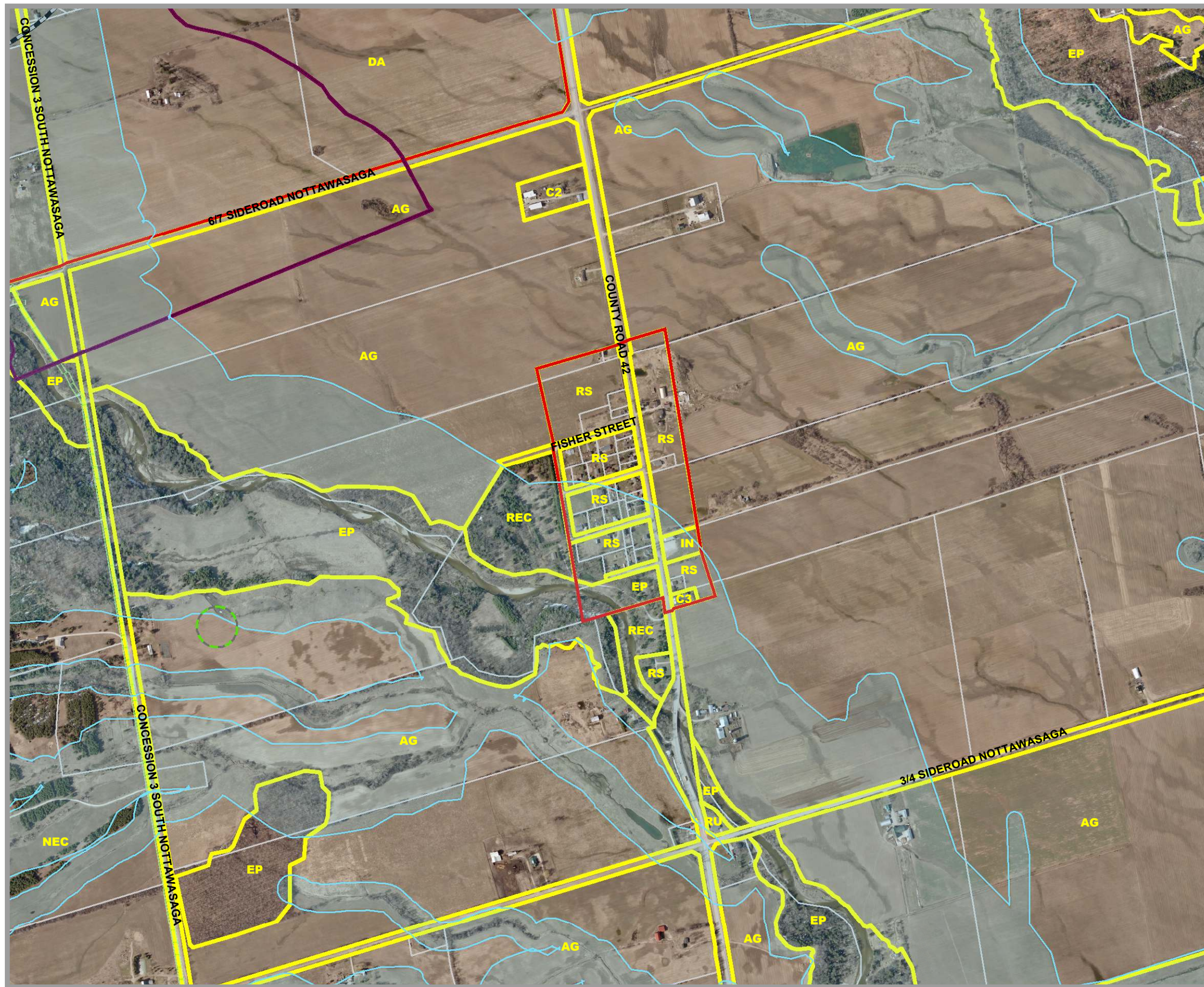
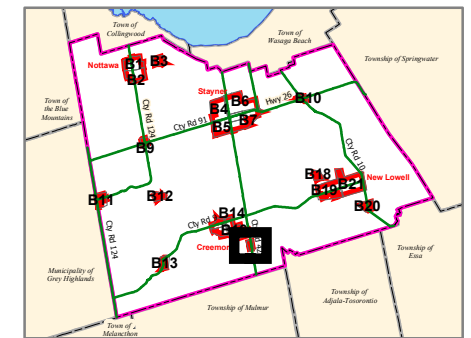


CLEARVIEW TOWNSHIP COMPREHENSIVE ZONING BY-LAW

SCHEDULE B17 AVENING AREA

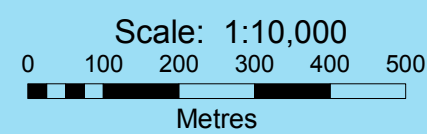


AGRICULTURAL	AG	AGRICULTURAL	AGC	AGRICULTURALLY RELATED COMMERCIAL	AG-EL	AGRICULTURAL LIVESTOCK USE EXCEPTION	AG-ER	AGRICULTURAL RESIDENTIAL USE EXCEPTION	AGI	AGRICULTURALLY RELATED INDUSTRIAL	AGK	AGRICULTURAL KENNEL	MG	INDUSTRIAL GENERAL	MP	INDUSTRIAL PRESTIGE	MR	INDUSTRIAL RESTRICTED	MW	INDUSTRIAL WASTE DISPOSAL	NIAGARA ESCARPMENT	NEC	NIAGARA ESCARPMENT COMMISSION																								
COMMERCIAL	C1	COMMERCIAL GENERAL	C2	COMMERCIAL HIGHWAY	C3	COMMERCIAL SERVICE	C4	COMMERCIAL LARGE FORMAT	C5	COMMERCIAL NEIGHBOURHOOD	C6	COMMERCIAL COUNTRY	CT1	COMMERCIAL TRANSITION 1	CT2	COMMERCIAL TRANSITION 2	RECC	COMMERCIAL RECREATION LANDS	RECREATION	REC	RECREATION LANDS	RECT	RECREATIONAL TRAIL	RESIDENTIAL	RE	RESIDENTIAL ESTATE	RS	RESIDENTIAL HAMLET	RS1	RESIDENTIAL LARGE LOT	RS2	RESIDENTIAL LOW DENSITY	RS3	RESIDENTIAL MULTIPLE LOW DENSITY	RS4	RESIDENTIAL MEDIUM DENSITY	RS5	RESIDENTIAL MULTIPLE MEDIUM DENSITY	RS6	RESIDENTIAL HIGH DENSITY	RSBB	SETTLEMENT AREA B&B	RURAL	RU	RURAL	RUK	RURAL KENNEL
ENVIRONMENTAL	EP	ENVIRONMENTAL PROTECTION	DEVELOPMENT AREA	DA	DEVELOPMENT AREA	INSTITUTIONAL	IN	INSTITUTIONAL	INR1	INSTITUTIONAL RESIDENTIAL 1	INR2	INSTITUTIONAL RESIDENTIAL 2	INDUSTRIAL	MA	INDUSTRIAL AIRPORT																																

- Settlement Area Boundary
- Niagara Escarpment Boundary
- Commercial Transition 1 Area
- Zone Boundary
- FP Hazard Land Area
- Parcel Boundary
- FPSP Hazard Land Special Policy
- Utility Line
- MARA Mineral Aggregate Resource Area
- Railway
- WDAA Waste Disposal Assessment Area
- Abandoned Railway
- WHPA Well Head Protection Area
- Subject to Appeal Before OMB

By-Law 06-54
As Approved by Council, October 23, 2006
Fran Sainsbury
Fran Sainsbury, Mayor
Robert Campbell
Robert Campbell, Clerk

This map, either in whole or in part, may not be reproduced without the written authority from the County of Simcoe. Copyright County of Simcoe Land Information Network Cooperative © LINC 2009.
Produced in part under license from the Cities of Barrie & Orillia, the Ontario Ministry of Natural Resources (Copyright © Queen's Printer 2006), © Teraviva Enterprises Inc. and its suppliers all rights reserved, and Members of the Ontario Geospatial Data Exchange.
THIS IS NOT A PLAN OR SURVEY.
For information call (705) 726-9300 or visit www.county.simcoe.on.ca



Note: All the elements in the legend may not appear on the map.
SCHEDULE B17 AVENING AREA