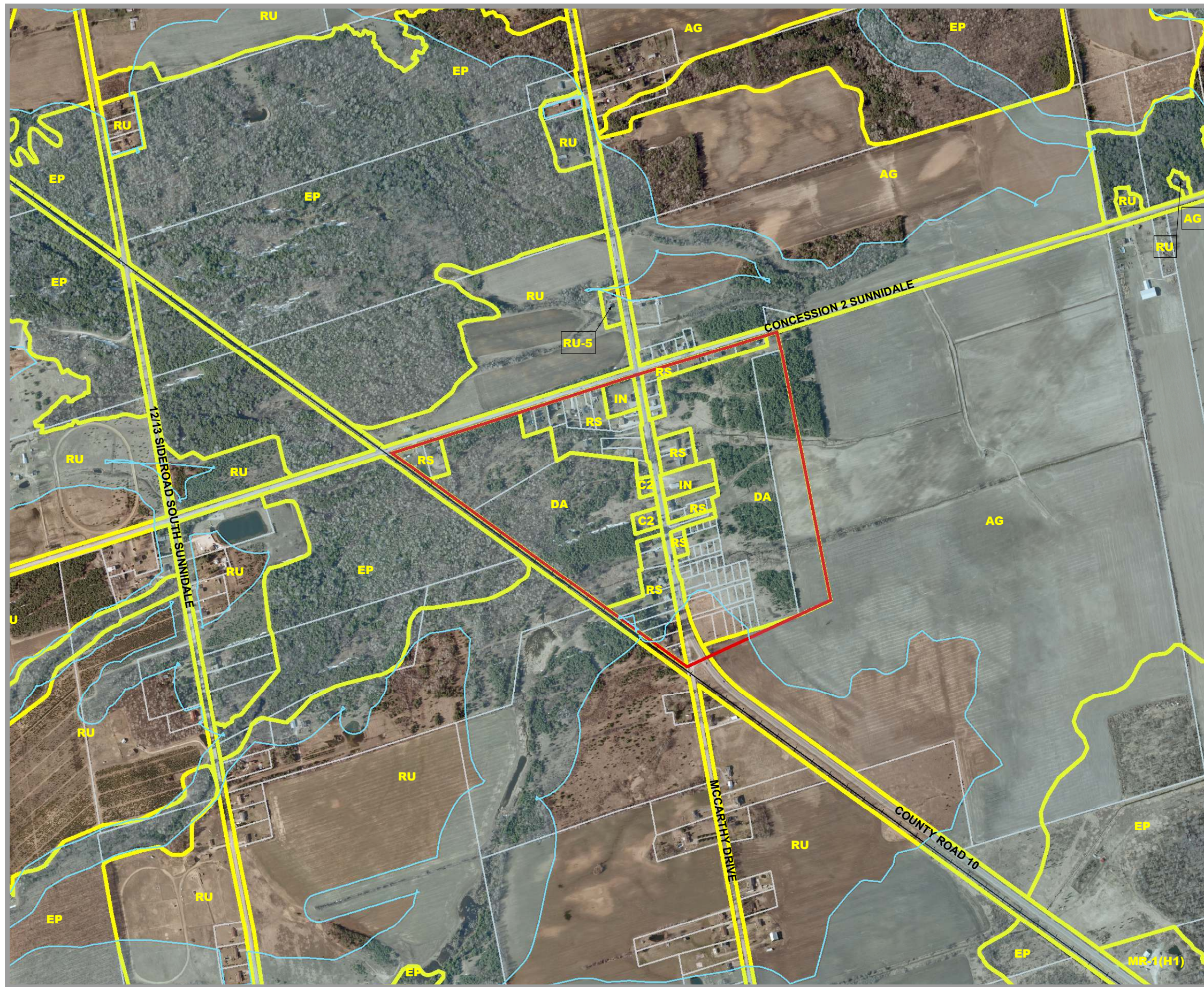
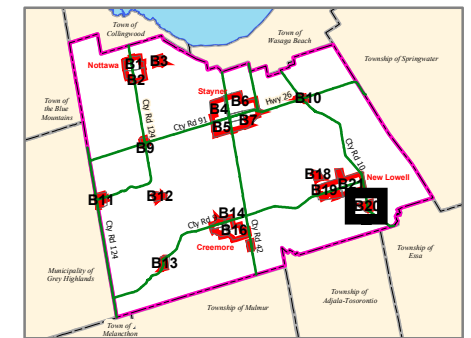


CLEARVIEW TOWNSHIP COMPREHENSIVE ZONING BY-LAW

SCHEDULE B20 BRENTWOOD AREA



AGRICULTURAL	AG AGRICULTURAL	AGC AGRICULTURALLY RELATED COMMERCIAL	AG-EL AGRICULTURAL LIVESTOCK USE EXCEPTION	AG-ER AGRICULTURAL RESIDENTIAL USE EXCEPTION	AGI AGRICULTURALLY RELATED INDUSTRIAL	AGK AGRICULTURAL KENNEL	MG INDUSTRIAL GENERAL	MP INDUSTRIAL PRESTIGE	MR INDUSTRIAL RESTRICTED	MW INDUSTRIAL WASTE DISPOSAL
COMMERCIAL	C1 COMMERCIAL GENERAL	C2 COMMERCIAL HIGHWAY	C3 COMMERCIAL SERVICE	C4 COMMERCIAL LARGE FORMAT	C5 COMMERCIAL NEIGHBOURHOOD	C6 COMMERCIAL COUNTRY	CT1 COMMERCIAL TRANSITION 1	CT2 COMMERCIAL TRANSITION 2	RECC COMMERCIAL RECREATION LANDS	
ENVIRONMENTAL	EP ENVIRONMENTAL PROTECTION									
DEVELOPMENT AREA	DA DEVELOPMENT AREA									
INSTITUTIONAL	IN INSTITUTIONAL	INR1 INSTITUTIONAL RESIDENTIAL 1	INR2 INSTITUTIONAL RESIDENTIAL 2							
INDUSTRIAL	MA INDUSTRIAL AIRPORT									
							NEC NIAGARA ESCARPMENT COMMISSION			
							RECREATION			
							REC RECREATION LANDS			
							RECT RECREATIONAL TRAIL			
							RESIDENTIAL			
							RE RESIDENTIAL ESTATE			
							RS RESIDENTIAL HAMLET			
							RS1 RESIDENTIAL LARGE LOT			
							RS2 RESIDENTIAL LOW DENSITY			
							RS3 RESIDENTIAL MULTIPLE LOW DENSITY			
							RS4 RESIDENTIAL MEDIUM DENSITY			
							RS5 RESIDENTIAL MULTIPLE MEDIUM DENSITY			
							RS6 RESIDENTIAL HIGH DENSITY			
							RSBB SETTLEMENT AREA B&B			
							RURAL			
							RU RURAL			
							RUK RURAL KENNEL			

- Settlement Area Boundary
- Commercial Transition 1 Area
- FP Hazard Land Area
- FPSP Hazard Land Special Policy
- MARA Mineral Aggregate Resource Area
- WDAA Waste Disposal Assessment Area
- WHPA Well Head Protection Area
- Subject to Appeal Before OMB
- Niagara Escarpment Boundary
- Zone Boundary
- Parcel Boundary
- Utility Line
- Railway
- Abandoned Railway

By-Law 06-54
As Approved by Council, October 23, 2006

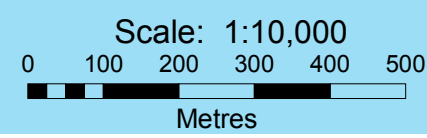
Fran Sainsbury

Fran Sainsbury, Mayor

Robert Campbell

Robert Campbell, Clerk

This map, either in whole or in part, may not be reproduced without the written authority from the County of Simcoe. Copyright County of Simcoe Land Information Network Cooperative © LINC 2006.
Produced in part under license from the Cities of Barrie & Orillia, the Ontario Ministry of Natural Resources (Copyright © Queen's Printer 2006), and Members of the Ontario Geospatial Data Exchange.
THIS IS NOT A PLAN OR SURVEY.
For information call (705) 726-9300 or visit www.county.simcoe.on.ca



Note: All the elements in the legend may not appear on the map.
SCHEDULE B20 BRENTWOOD AREA