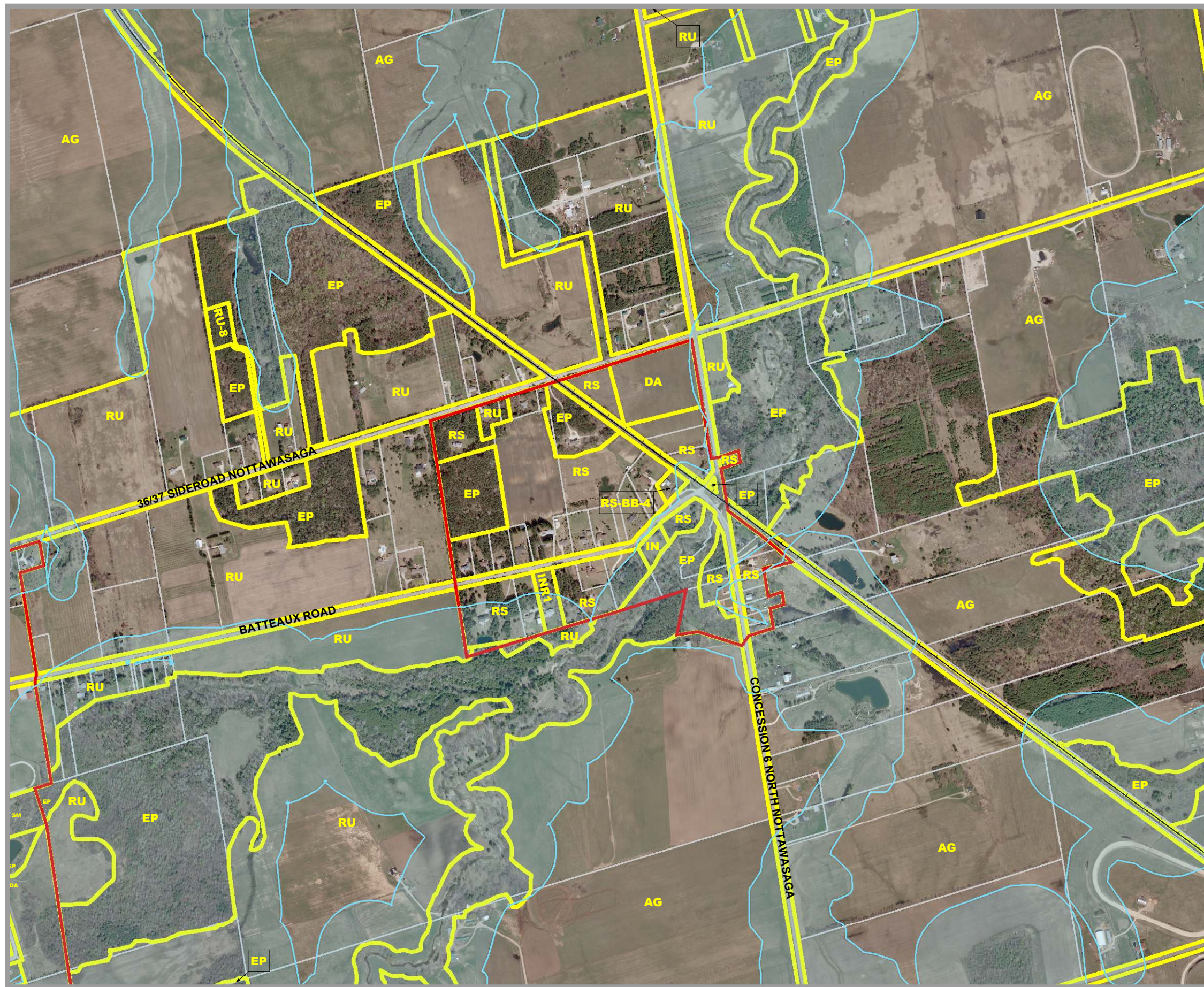
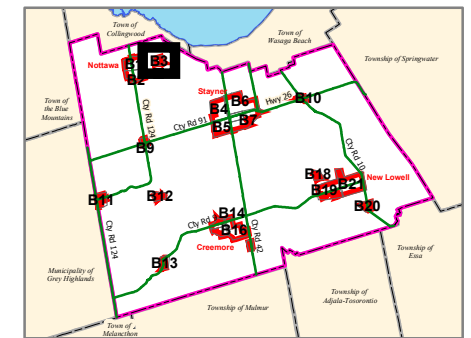


CLEARVIEW TOWNSHIP COMPREHENSIVE ZONING BY-LAW

SCHEDULE B3 BATTEAUX



AGRICULTURAL	AG AGRICULTURAL	AGC AGRICULTURALLY RELATED COMMERCIAL	AG-EL AGRICULTURAL LIVESTOCK USE EXCEPTION	AG-ER AGRICULTURAL RESIDENTIAL USE EXCEPTION	AGI AGRICULTURALLY RELATED INDUSTRIAL	AGK AGRICULTURAL KENNEL	MG INDUSTRIAL GENERAL	MP INDUSTRIAL PRESTIGE	MR INDUSTRIAL RESTRICTED	MW INDUSTRIAL WASTE DISPOSAL
COMMERCIAL	C1 COMMERCIAL GENERAL	C2 COMMERCIAL HIGHWAY	C3 COMMERCIAL SERVICE	C4 COMMERCIAL LARGE FORMAT	C5 COMMERCIAL NEIGHBOURHOOD	C6 COMMERCIAL COUNTRY	CT1 COMMERCIAL TRANSITION 1	CT2 COMMERCIAL TRANSITION 2	RECC COMMERCIAL RECREATION LANDS	
ENVIRONMENTAL	EP ENVIRONMENTAL PROTECTION									
DEVELOPMENT AREA	DA DEVELOPMENT AREA									
INSTITUTIONAL	IN INSTITUTIONAL	INR1 INSTITUTIONAL RESIDENTIAL 1	INR2 INSTITUTIONAL RESIDENTIAL 2							
INDUSTRIAL	MA INDUSTRIAL AIRPORT									
	RS1 RESIDENTIAL LARGE LOT	RS2 RESIDENTIAL LOW DENSITY	RS3 RESIDENTIAL MULTIPLE LOW DENSITY	RS4 RESIDENTIAL MEDIUM DENSITY	RS5 RESIDENTIAL MULTIPLE MEDIUM DENSITY	RS6 RESIDENTIAL HIGH DENSITY	RSBB SETTLEMENT AREA B&B			
	REC RECREATION LANDS	RECT RECREATIONAL TRAIL								
	RECREATION									
	RECREATION LANDS									
	RECREATIONAL TRAIL									
	RESIDENTIAL									
	RESIDENTIAL ESTATE									
	RESIDENTIAL HAMLET									
	RESIDENTIAL LARGE LOT									
	RESIDENTIAL LOW DENSITY									
	RESIDENTIAL MULTIPLE LOW DENSITY									
	RESIDENTIAL MEDIUM DENSITY									
	RESIDENTIAL MULTIPLE MEDIUM DENSITY									
	RESIDENTIAL HIGH DENSITY									
	SETTLEMENT AREA B&B									
	RURAL									
	RU RURAL									
	RUK RURAL KENNEL									
	Settlement Area Boundary	Niagara Escarpment Boundary								
	Commercial Transition 1 Area	Zone Boundary								
	FP Hazard Land Area	Parcel Boundary								
	FPSP Hazard Land Special Policy	Utility Line								
	MARA Mineral Aggregate Resource Area	Railway								
	WDAA Waste Disposal Assessment Area	Abandoned Railway								
	WHPA Well Head Protection Area									
	Subject to Appeal Before OMB									

By-Law 06-54
As Approved by Council, October 23, 2006

Fran Sainsbury

Fran Sainsbury, Mayor

Robert Campbell

Robert Campbell, Clerk

This map, either in whole or in part, may not be reproduced without the written authority from the County of Simcoe. Copyright County of Simcoe Land Information Network Cooperative © LINC 2006.
Produced in part under license from the Cities of Barrie & Orillia, the Ontario Ministry of Natural Resources (Copyright © Queen's Printer 2006), © Teraviva Enterprises Inc. and its suppliers all rights reserved, and Members of the Ontario Geospatial Data Exchange.
THIS IS NOT A PLAN OR SURVEY.
For information call (705) 726-9300 or visit www.county.simcoe.on.ca

