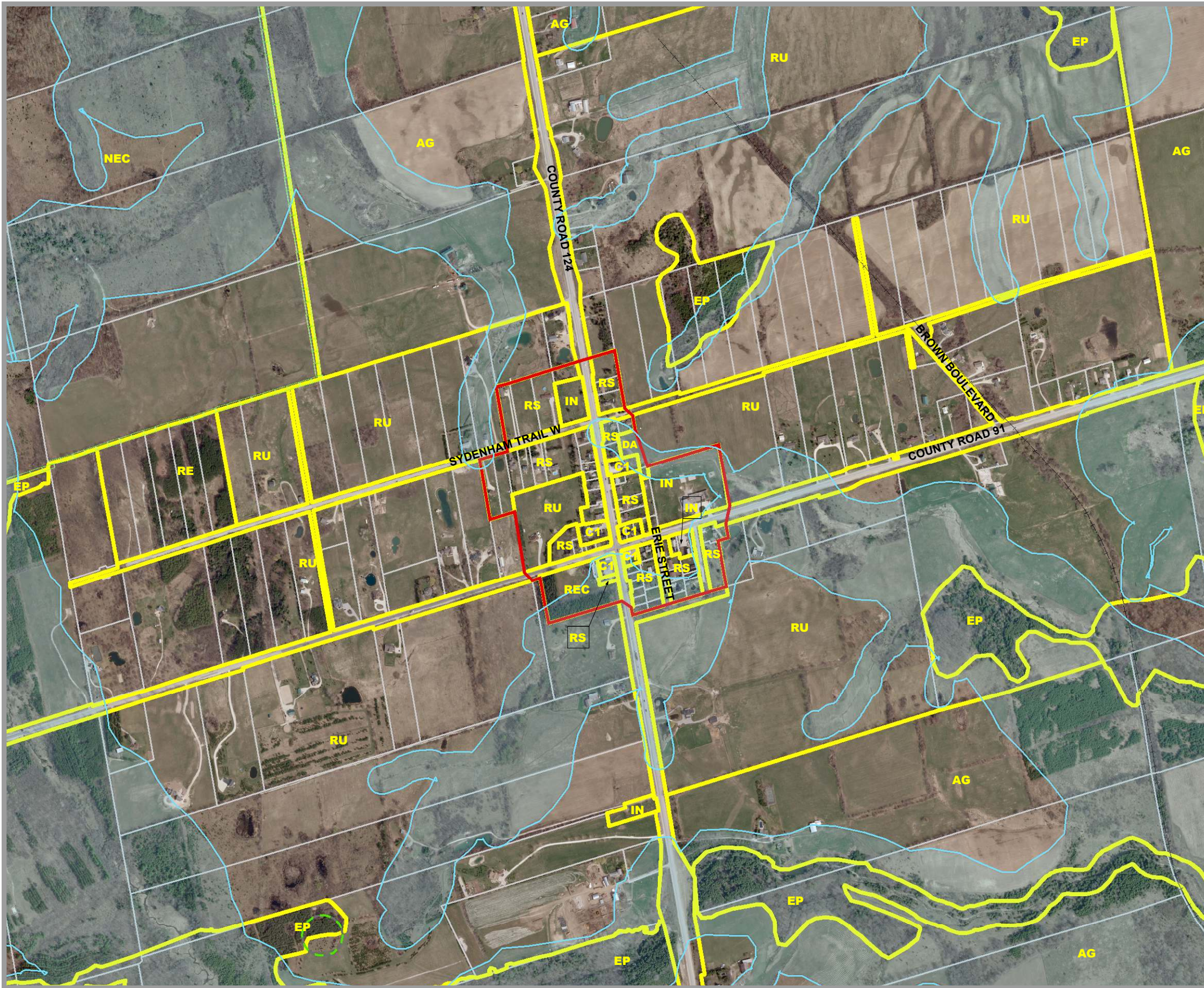
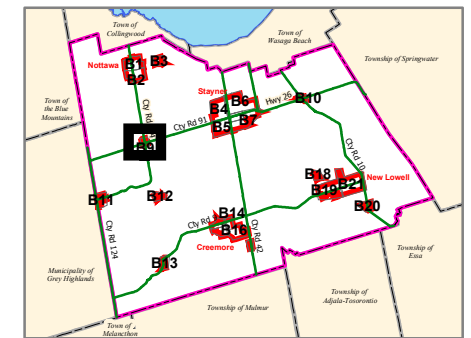


CLEARVIEW TOWNSHIP COMPREHENSIVE ZONING BY-LAW

SCHEDULE B9 DUNTRON AREA



AGRICULTURAL	AG AGRICULTURAL	AGC AGRICULTURALLY RELATED COMMERCIAL	AG-EL AGRICULTURAL LIVESTOCK USE EXCEPTION	AG-ER AGRICULTURAL RESIDENTIAL USE EXCEPTION	AGI AGRICULTURALLY RELATED INDUSTRIAL	AGK AGRICULTURAL KENNEL	MG INDUSTRIAL GENERAL	MP INDUSTRIAL PRESTIGE	MR INDUSTRIAL RESTRICTED	MW INDUSTRIAL WASTE DISPOSAL	NIAGARA ESCARPMENT
											NEC NIAGARA ESCARPMENT COMMISSION
											RECREATION
											REC RECREATION LANDS
											RECT RECREATIONAL TRAIL
											RESIDENTIAL
											RE RESIDENTIAL ESTATE
											RS RESIDENTIAL HAMLET
											RS1 RESIDENTIAL LARGE LOT
											RS2 RESIDENTIAL LOW DENSITY
											RS3 RESIDENTIAL MULTIPLE LOW DENSITY
											RS4 RESIDENTIAL MEDIUM DENSITY
											RS5 RESIDENTIAL MULTIPLE MEDIUM DENSITY
											RS6 RESIDENTIAL HIGH DENSITY
											RSBB SETTLEMENT AREA B&B
											RURAL
											RU RURAL
											RUK RURAL KENNEL
											COMMERCIAL
											C1 COMMERCIAL GENERAL
											C2 COMMERCIAL HIGHWAY
											C3 COMMERCIAL SERVICE
											C4 COMMERCIAL LARGE FORMAT
											C5 COMMERCIAL NEIGHBOURHOOD
											C6 COMMERCIAL COUNTRY
											CT1 COMMERCIAL TRANSITION 1
											CT2 COMMERCIAL TRANSITION 2
											RECC COMMERCIAL RECREATION LANDS
											ENVIRONMENTAL
											EP ENVIRONMENTAL PROTECTION
											DEVELOPMENT AREA
											DA DEVELOPMENT AREA
											INSTITUTIONAL
											IN INSTITUTIONAL
											INR1 INSTITUTIONAL RESIDENTIAL 1
											INR2 INSTITUTIONAL RESIDENTIAL 2
											INDUSTRIAL
											MA INDUSTRIAL AIRPORT

- Settlement Area Boundary
- Commercial Transition 1 Area
- FP Hazard Land Area
- FPSP Hazard Land Special Policy
- MARA Mineral Aggregate Resource Area
- WDAA Waste Disposal Assessment Area
- WHPA Well Head Protection Area
- Subject to Appeal Before OMB
- Niagara Escarpment Boundary
- Zone Boundary
- Parcel Boundary
- Utility Line
- Railway
- Abandoned Railway

By-Law 06-54
As Approved by Council, October 23, 2006

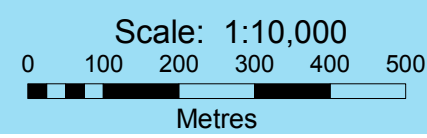
Fran Sainsbury

Fran Sainsbury, Mayor

Robert Campbell

Robert Campbell, Clerk

This map, either in whole or in part, may not be reproduced without the written authority from the County of Simcoe. Copyright County of Simcoe Land Information Network Cooperative © LINC 2009.
Produced in part under license from the Cities of Barrie & Orillia, the Ontario Ministry of Natural Resources (Copyright © Queen's Printer 2006), © Teraviva Enterprises Inc. and its suppliers all rights reserved, and Members of the Ontario Geospatial Data Exchange.
THIS IS NOT A PLAN OR SURVEY.
For information call (705) 726-9300 or visit www.county.simcoe.on.ca



Note: All the elements in the legend may not appear on the map.
SCHEDULE B9 DUNTRON AREA